

$P_I=19.82\text{kW}$:

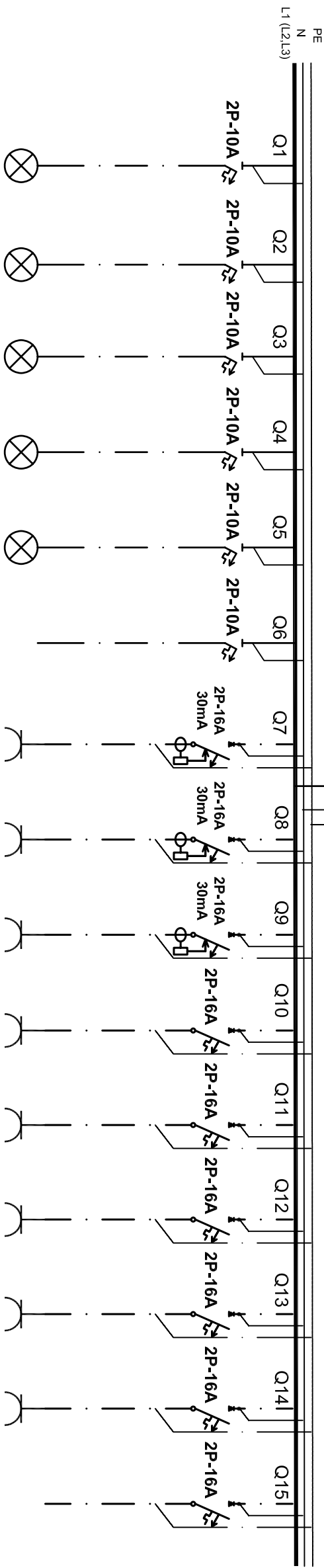
$P_a=14kW$

IC=24A

$I_{sc}=10\text{ kA}$

curba de declansare B

TEP



Circuit	C1	C2	C3	C4	C5	C6		CP1	CP2	CP3	CP4	CP5	CP6	CP7	CP8	CP9
Destination/ Destination	Illuminat Anexa Lab. chimie	Illuminat Biblioteca Gr. sanitar	Illuminat Hol	Illuminat Cab. medical Director Secretariat	Illuminat Clasa Cab. religie	Rezerva		Prize Lab. chimie	Prize Lab. chimie	Prize Lab. chimie	Prize Biblioteca Anexa	Prize Cab. medical Director Hol	Unitate AC split-unit	Prize Clasa Secretariat	Prize Clasa Hol	Rezerva
Numar CIL/Ptze Number CIL/ Sockets	12	20	8	10	16	-		4	8	8	5	6	1	6	5	-
Putere [kW] Power	0.84	0.80	0.32	0.72	1.12	-		2	2	2	2	2	2	2	2	-
Ic [A]	5	5	2	5	6	-		10	10	10	10	10	10	10	10	-
Section FV/IV/ Section	2x1.5/16	2x1.5/16	2x1.5/16	2x1.5/16	2x1.5/16	-		3x2.5/20	3x2.5/20	3x2.5/20	3x2.5/20	3x2.5/20	3x2.5/20	3x2.5/20	3x2.5/20	-
Faza/Phase	L1	L2	L3	L3	L3			L1	L2	L3	L1	L2	L3	L1	L2	

L1=6.84KW
L2=6.80KW
L3=6.20KW

SPECIFICATIE TEHNICA TER/TECHNICAL SPECIFICATIONS TER

Disjunctor cu protecție la suprasarcină și scurtcircuit 2P-16A

cu protecție diferențială de 30 mA

and differential protection 30mA

Q1-Q6 Interrupator automat 2P-10A

Automatic switch 2P-10A






Q10-Q15 **Interrupator automat 2P-16A**




Automatic switch 2P-16A

Q16 **Separator de sarcina 3P-32A**

Charge separator 3P-32A

LEGENDA/LEGEND :

- | | |
|---|---|
|  | - Disjuncteur cu protecție diferențială
Circuit breaker with differential protection |
|  | - Disjuncteur magneto-termic
Thermo-magnetic circuit breaker |
|  | - Circuit de priză monofazat
Monophase socket circuit |
|  | - Circuit lumina
Lighting circuit |
|  | - Separator de sarcină
Charge separator |

VERIFICATOR	NUME	SEMNATURA	CERINTA	REFERAT / EXPERTIZA NR. / DATA
M.L.P.A.T.	Pr.Dr.Ing. Moroldo C. Dan		1e	194 / 05.04.2006
PROJECT DESIGN COORDINATOR: COORDINATOR PROJECT:				
 THE LOUIS BERGER GROUP, INC				
BUCHAREST SCHOOLS INFRASTRUCTURE REHABILITATION / REABILITAREA INFRASTRUCTURII EDUCATIONALE IN MUNICIPIUL BUCURESTI				
DESIGNER/PROJECTANT:				
 340/7395/1995	M4			
	M3			
	M2			
	M1			
	Modif	Date/Date	DESIGNED BY/PROJECTAT	VERIFIED BY/ VERIFICAT
BENEFICIARY/BENEFICIAR MUNICIPALITY OF BUCHAREST PRIMARIA MUNICIPIULUI BUCURESTI			SCHOOL NAME/ NUME SCOALA General School no. 310 / Scoala generala nr. 310	
DESIGNED BY PROJECTAT	NAME/ NUME	SIGNAT./SEMNATURA	TYPE OF WORKS/ LUCRARE	
VERIFIED BY VERIFICAT	Ing. B. Irimila		ELECTRICAL WORKS / LUCRARE DE ELECTRICE SCHOOL - BUILDING A / CLADIRE SCOALA - CORP A	
PROJ. DIR. SET PROJECT	Ing. A. Barbatat		TITLE/ PLANS	
DATE/ DATA	04/2006	SCALE/ SCARA	EXEMPLAR NR.	PROJ. PHASE/FAZA PROJECT Detailed Design Project tehnic
PROJ. No./Nr.-PROJECT 087/56				DRWG. No./Nr. PLANS A-IE/007
It is prohibited to copy, multiply or print this document without written approval of THE LOUIS BERGER GROUP, INC. Este interzisă copierea, multiplicarea și imprimarea documentului fără aprobarea scrisă a THE LOUIS BERGER GROUP, INC.				